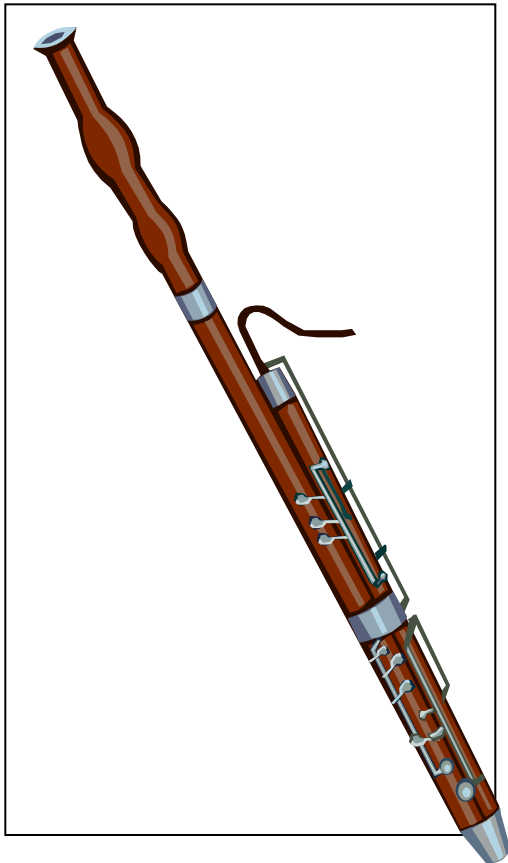
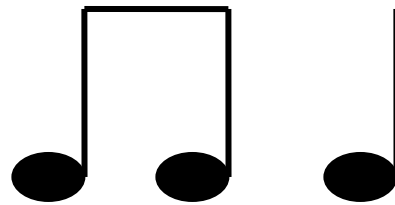
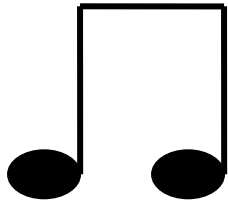
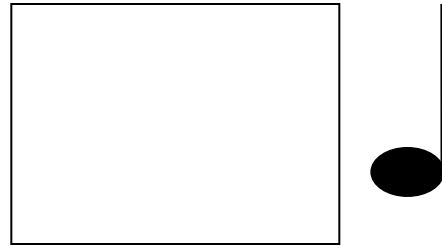
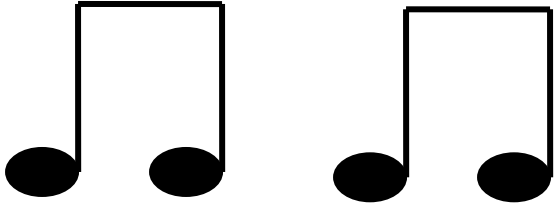


Fill in the missing rhythms using stick notation. *Hint: Use the same rhythm both times.*

Finnish Fantasy by Alexander Glazunov

2
4



The bassoon is the melody instrument playing the solo. It is a double reed instrument and a member of the woodwind family. Circle the name of the other double reed instrument in the woodwind family from the choices below.

- A. Flute
- B. Clarinet
- C. Saxophone
- D. Oboe